

BASKETBALL VICTORIA

1PO MECHANICS GUIDE



INTRODUCTION

This guide will provide an outline of the basics of **1 person officiating** (1PO).

Please note that this is not an alternative to **2 person officiating** (2PO), rather a contingency for Associations when they have less than optimal number of officials.

If you are in a 1PO situation, be sure to inform the relevant senior official.

It is also important that all coaches and players are aware there is only one official.

TABLE OF CONTENTS

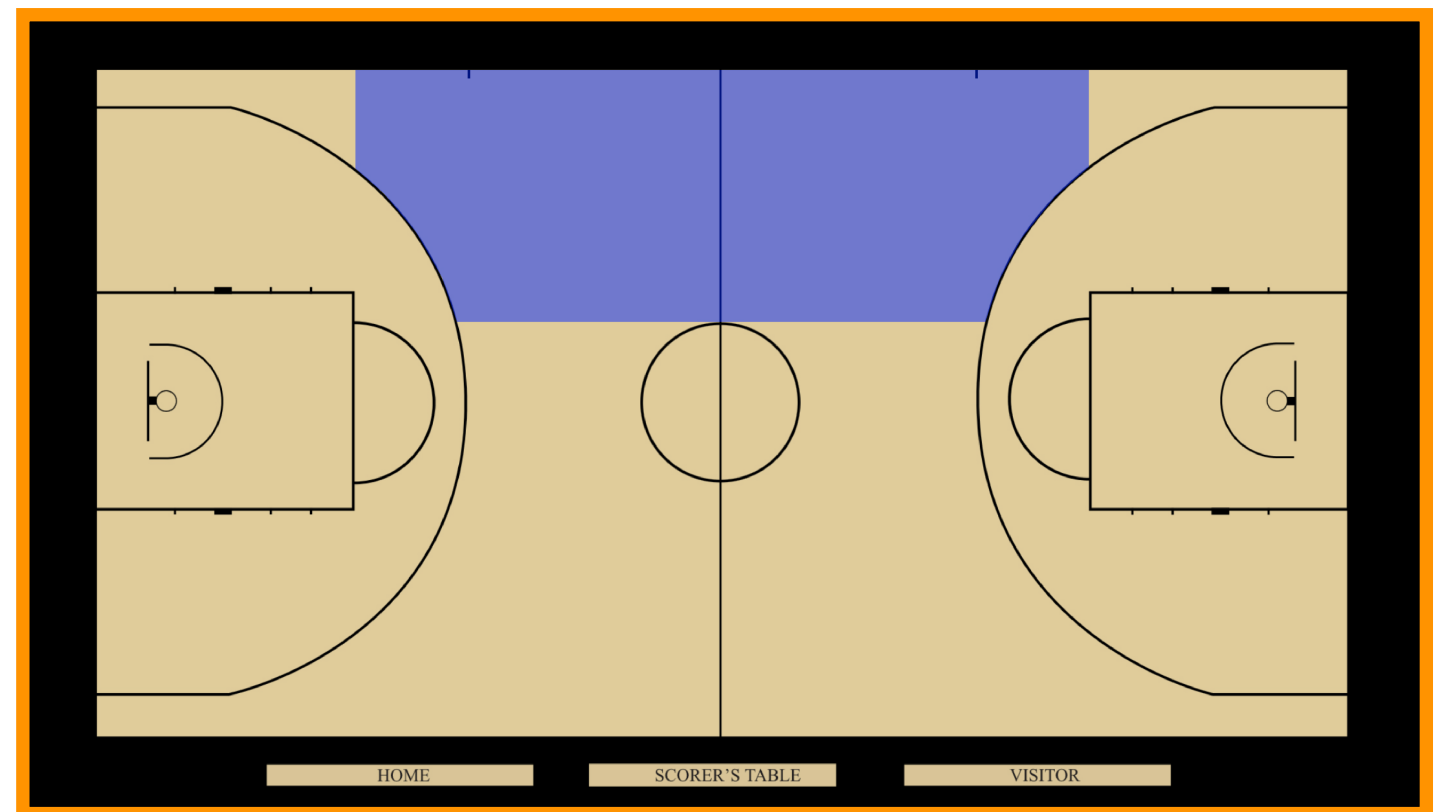
1PO	WORKING AREA
	POSITIONING
	THROW-INS
	FREE THROWS
	SEEKING HELP

1PO MECHANICS GUIDE

WORKING AREA

As the sole official, you must work to get into a position where you can see the entirety of the play.

This is the recommended working area (blue).



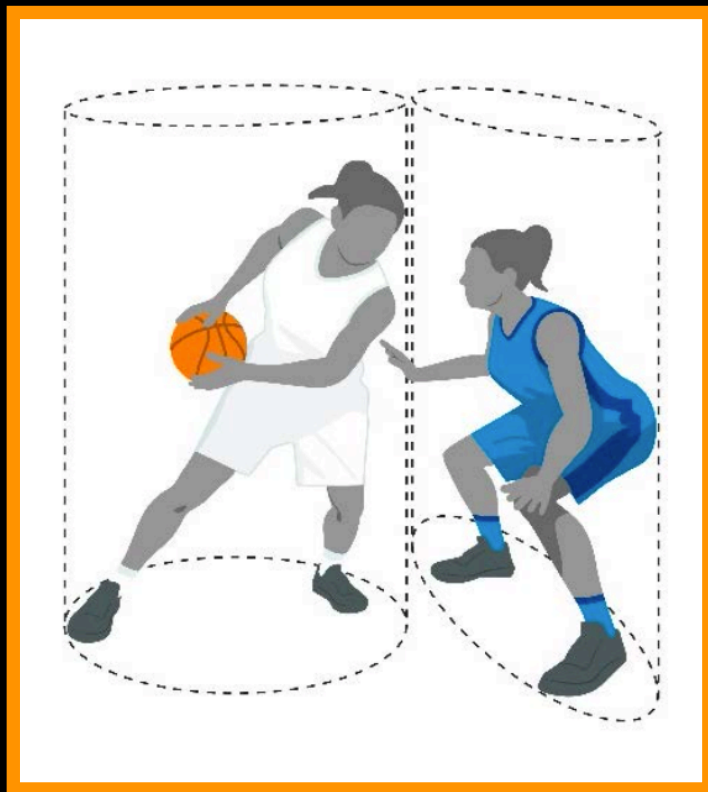
1PO MECHANICS GUIDE

POSITIONING

To best identify if a foul has been committed, you should focus your attention on the defensive players and look for illegal actions.

Within the working area, find a position where you see a gap between the offensive and defensive players.

As the sole official, you will need to extend your vision to more than the on-ball matchup.



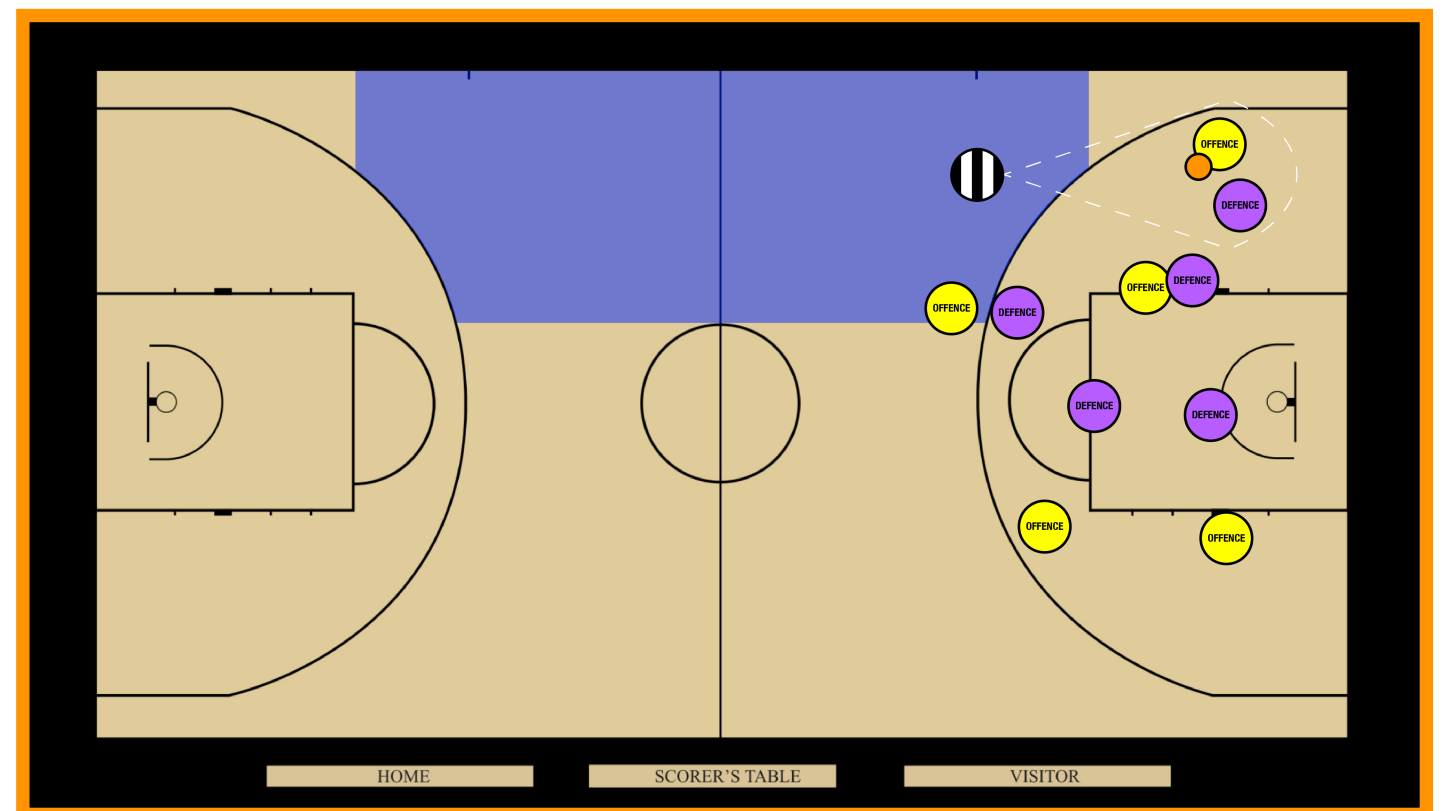
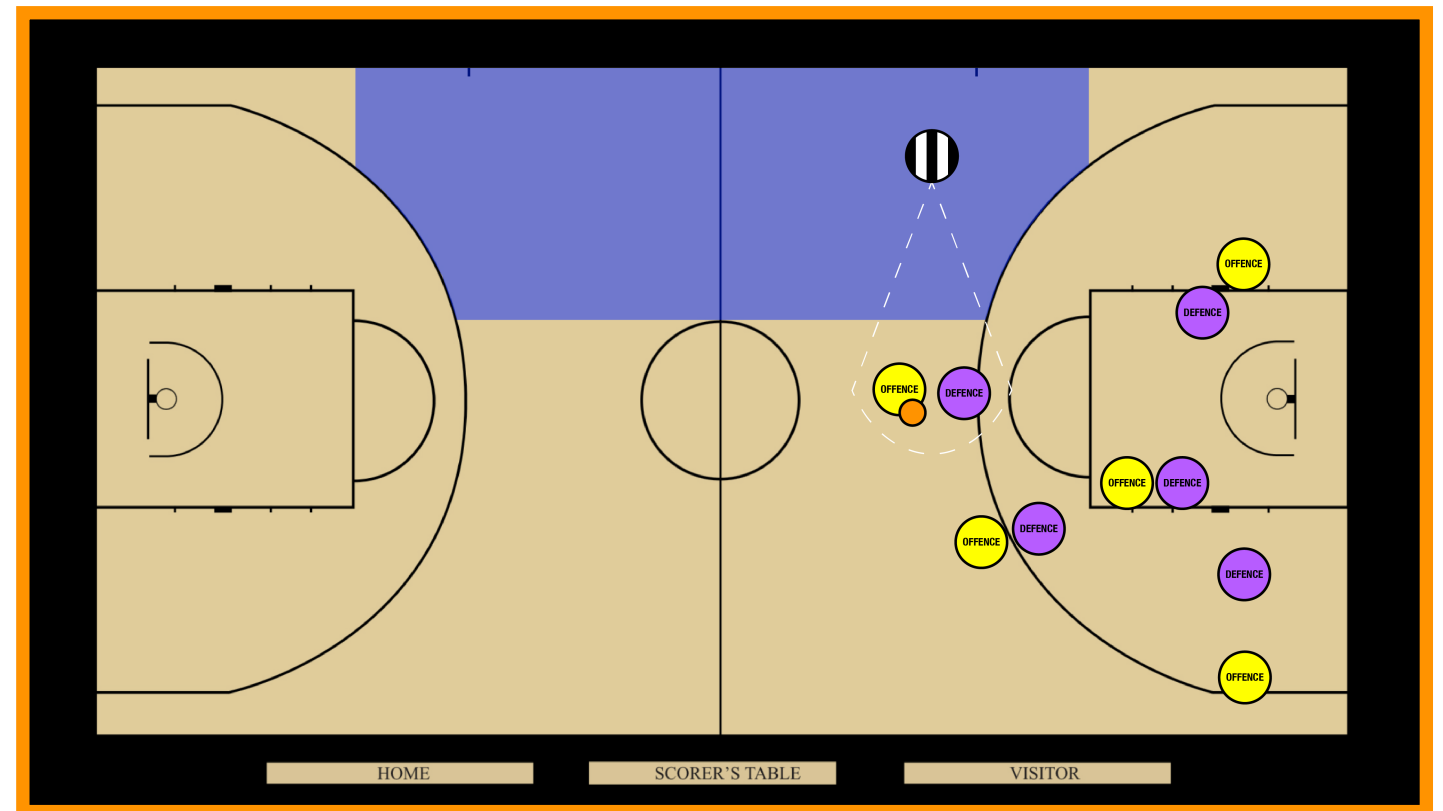
1PO MECHANICS GUIDE

POSITIONING

MOVE WITHIN THE WORKING AREA.

FOCUS ON THE ON-BALL MATCH-UP.

MAINTAIN AN AWARENESS OF OFF-BALL MATCH-UPS.



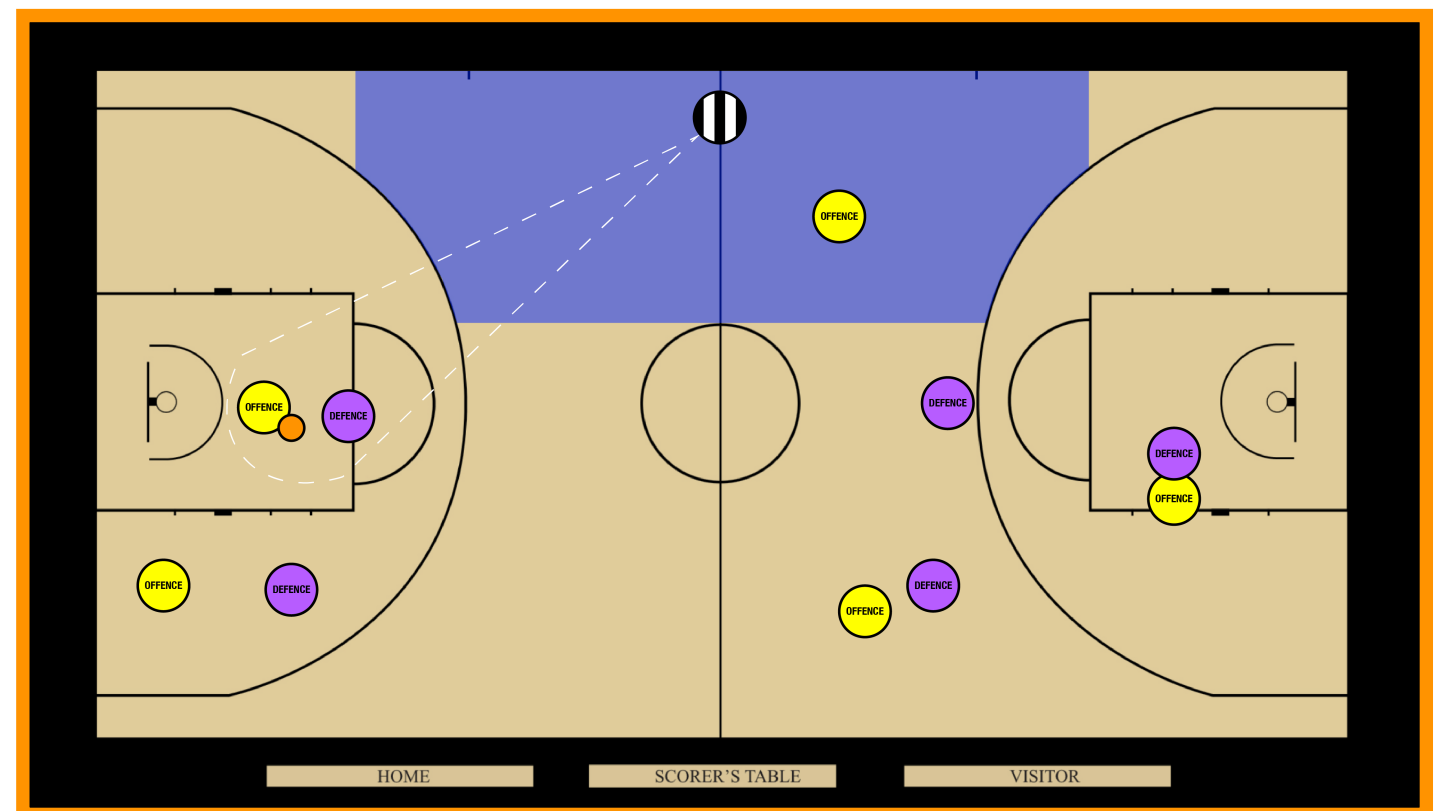
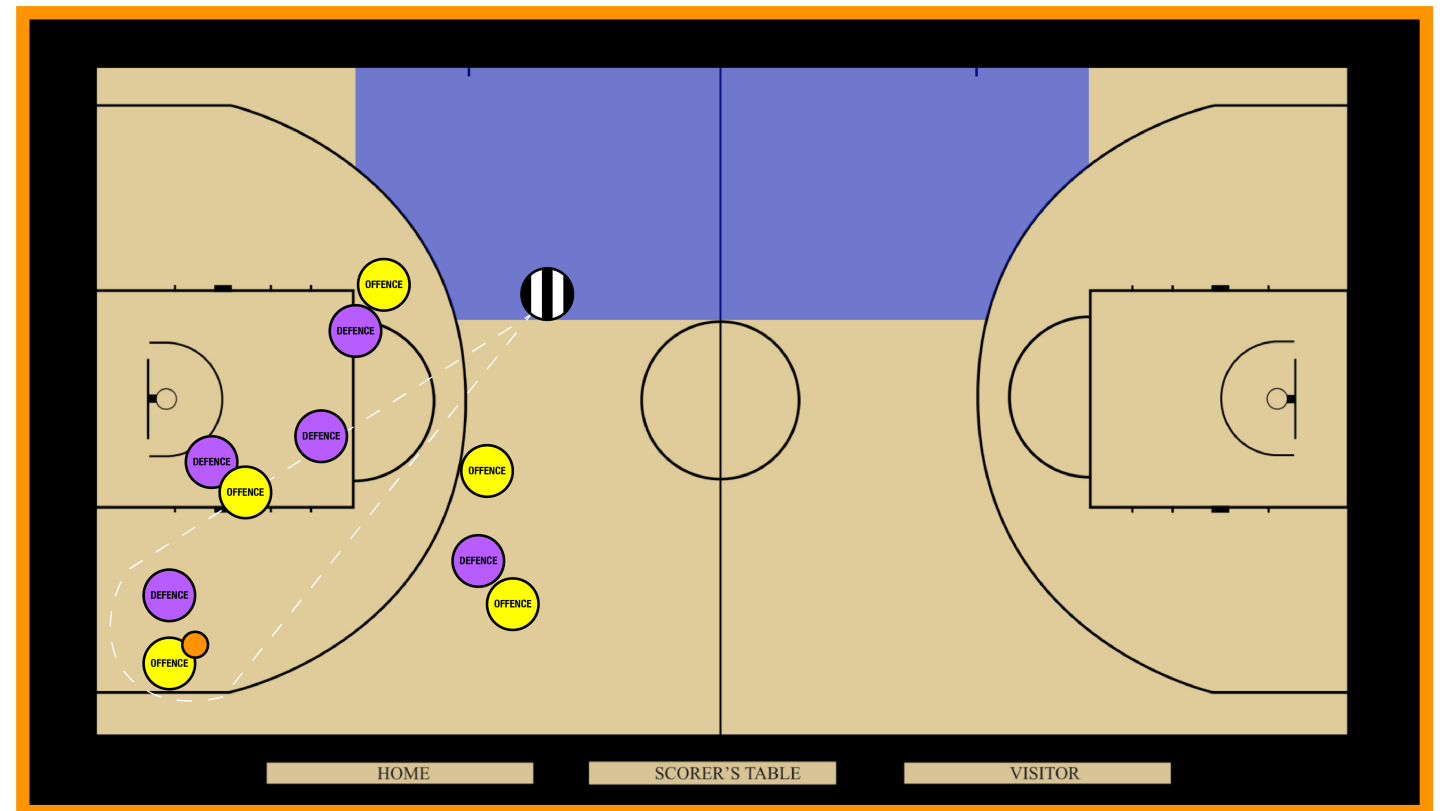
1PO MECHANICS GUIDE

POSITIONING

MOVE WITHIN THE WORKING AREA.

FOCUS ON THE ON-BALL MATCH-UP.

MAINTAIN AN AWARENESS OF OFF-BALL MATCH-UPS.



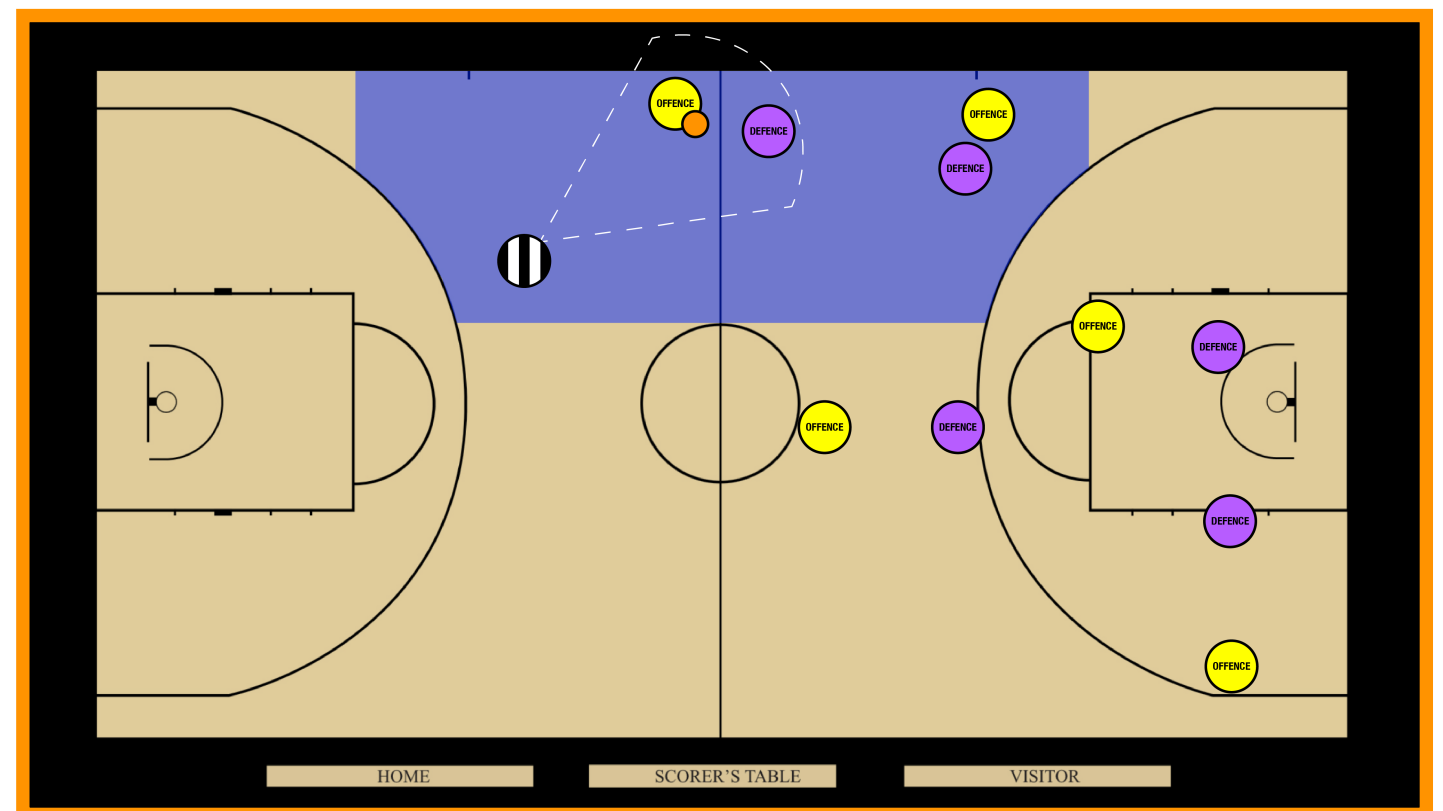
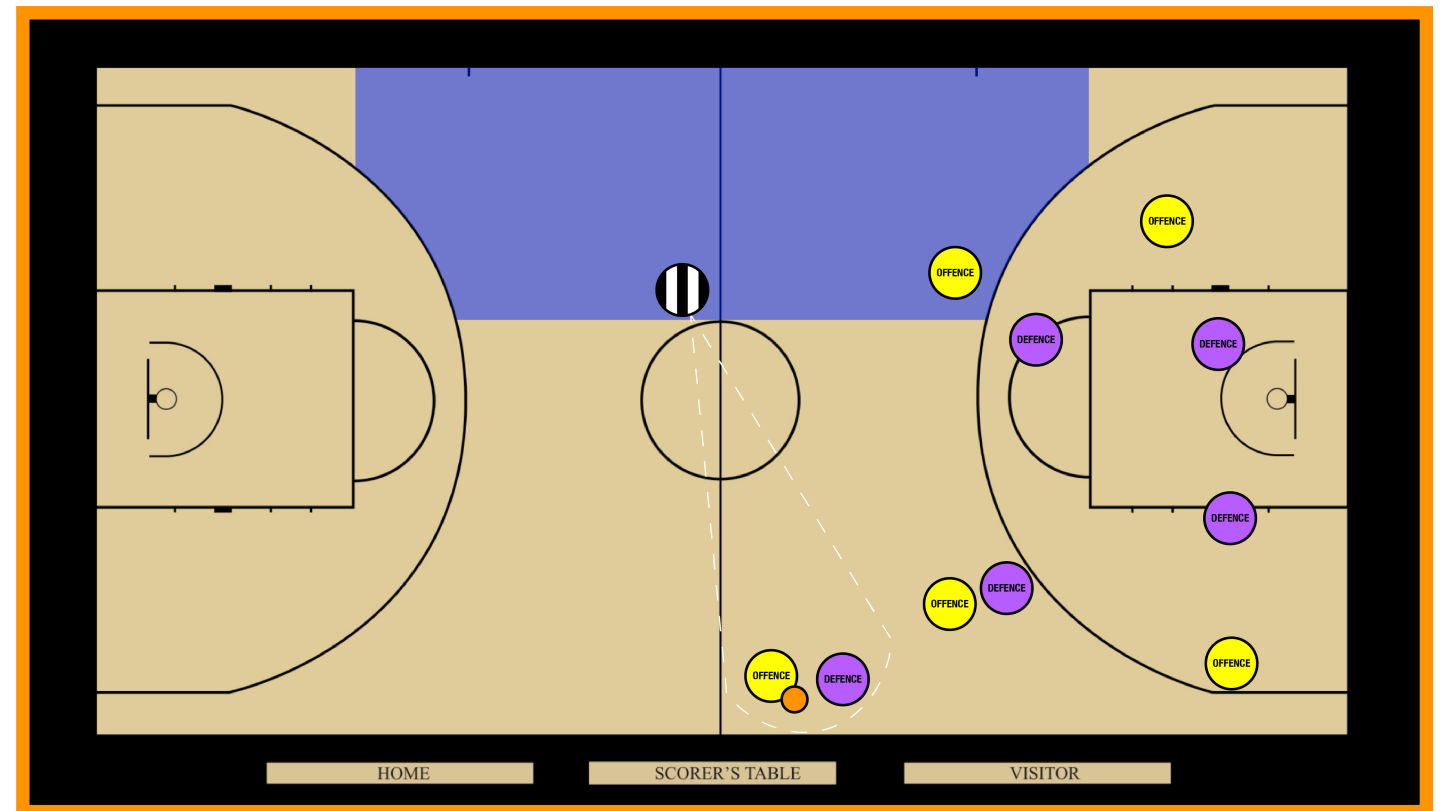
1PO MECHANICS GUIDE

POSITIONING

MOVE WITHIN THE WORKING AREA.

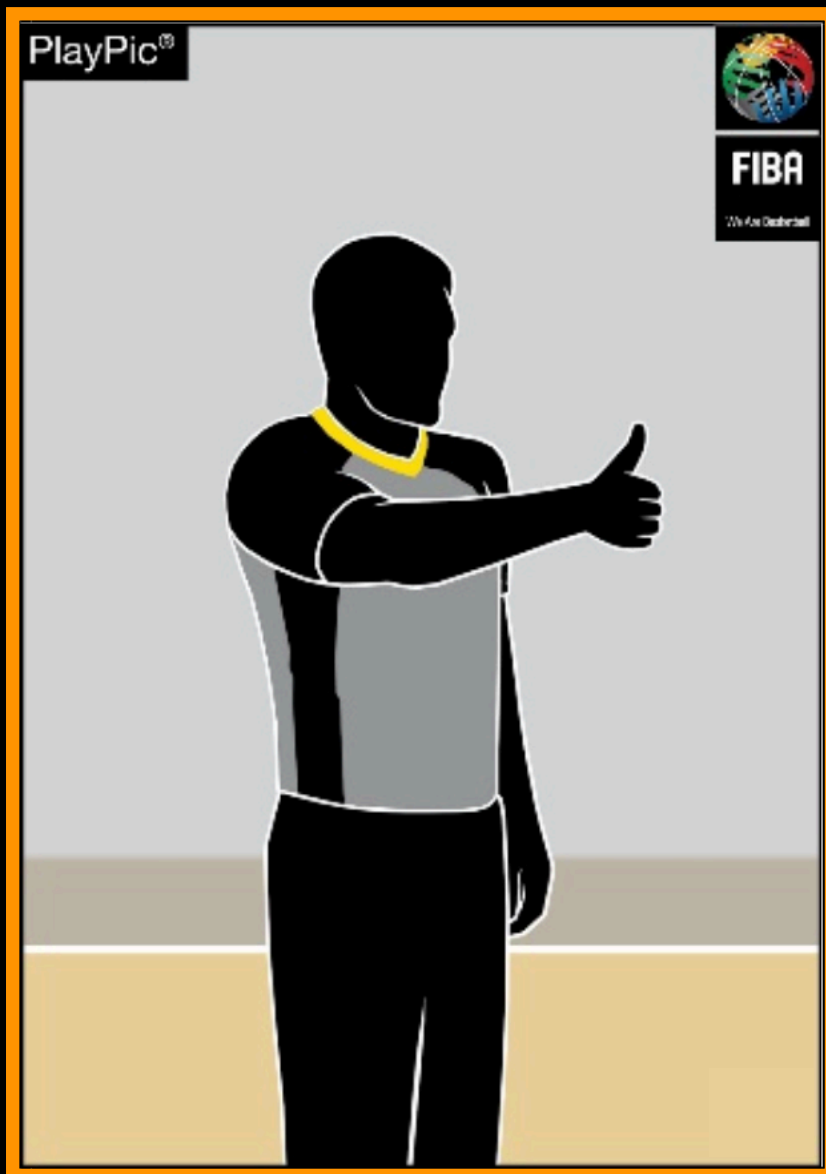
FOCUS ON THE ON-BALL MATCH-UP.

MAINTAIN AN AWARENESS OF OFF-BALL MATCH-UPS.



1PO MECHANICS GUIDE

THROW-INS



When a throw-in must be taken following a whistle:

1. Designate the location of the throw-in.
2. Bounce pass the ball to the player taking the throw-in.
3. Instruct them to wait for you to give a thumbs up signal.
4. Assume an appropriate position within the working area.
5. Blow your whistle and give this signal to the player taking the throw-in.

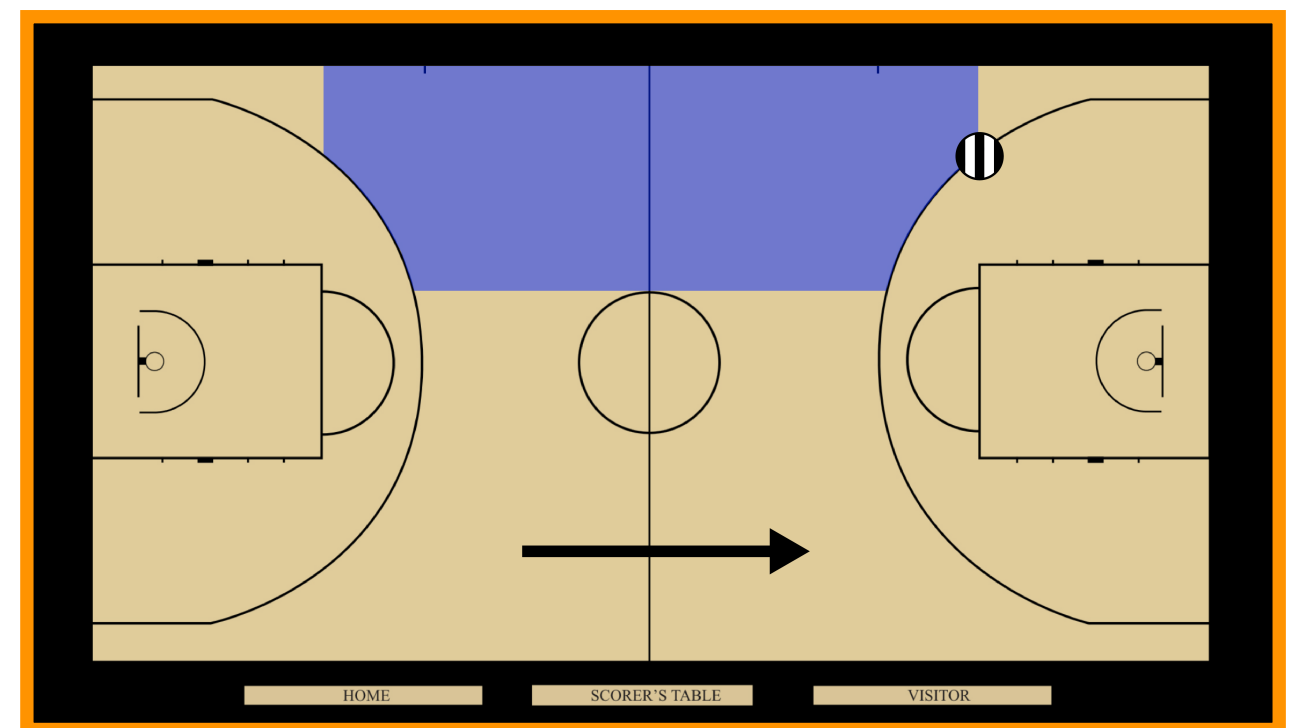
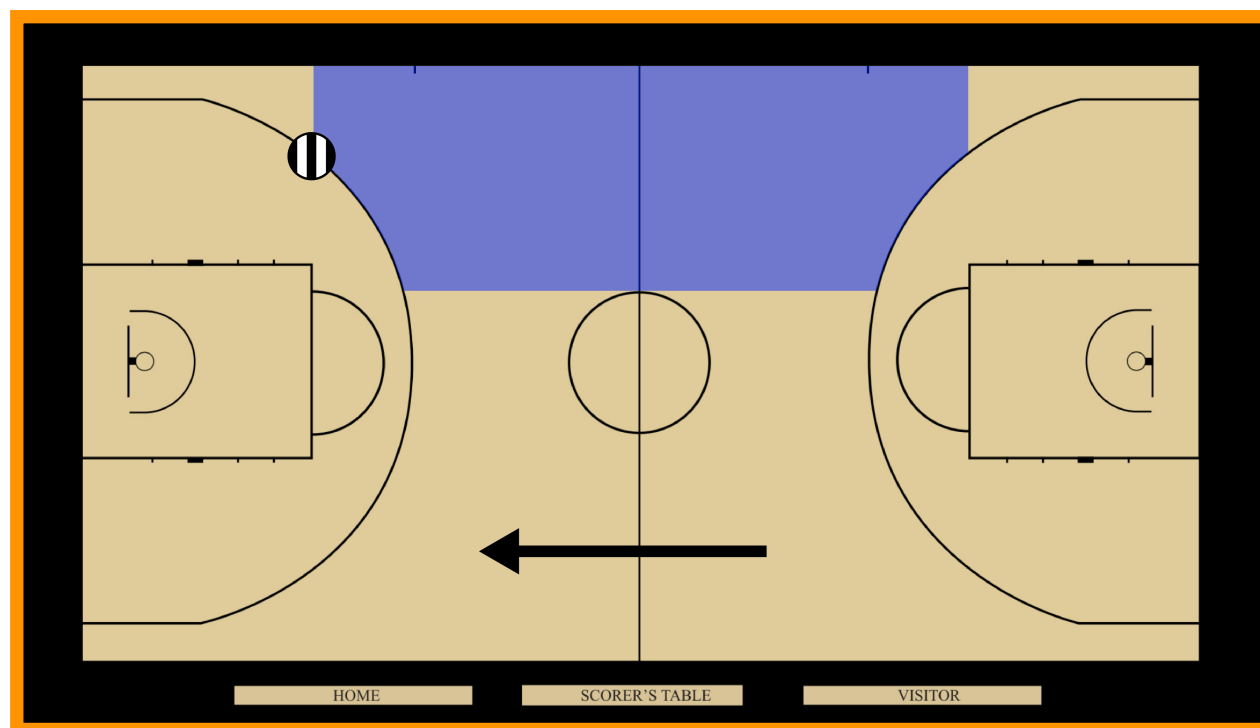
Players taking a throw-in shall only move 1m either side of the designated location.

1PO MECHANICS GUIDE

FREE THROWS



Retrieve the ball and assume this position on the floor once the players are set up correctly:



1PO MECHANICS GUIDE

FREE THROWS



Bounce the ball to the shooter and indicate how many free throws are being awarded.

Repeat this process until the last free throw is attempted, after which play will resume.



SEEKING HELP

If, during the game, you need support or clarification, stop the game and inform the relevant senior official.

The safety and wellbeing of each official is paramount, particularly when **1 person officiating** is implemented due to the circumstances within an Association.